

## UL498 美标插头插座量规清单

深圳市创鑫仪器有限公司专业生产研发生产及销售：

1、材料燃烧试验设备：灼热丝试验仪, 漏电起痕试验仪, 针焰试验仪, 水平垂直燃烧试验仪。

2、电器附件可靠性试验产品：弹簧冲击锤, IP 防护等级试验探棒、温升测试角, 防风罩。

3、灯头灯座量规：E14、E17、E26、E27, B15, B22, G5、GU5.3、GU10、G13 等

4、各国标准插头插座类量规：国标 GB1002、GB1003、GB17465, 英标 BS1363, 德标 DIN-VDE0620-1, 美标 UL498, 澳标 AS/NZS3112, 欧标 EN50075 等标准插头插座量规。

二、量规用途：用来检验和检查 UL498 标准系列下的插头插座结构尺寸。清单如下表：

序号	量规名称	图号/标准		件数
		旧版本	新版本	
1	Articulate probe with web stop	Figure 9.1	Figure 9.1	1
2	Probe	Figure 10.1	Figure 10.1	1
3	Flat probe	Figure 31.1	Figure 31.1	1
4	Reference plug	Figure 69.1	Figure 73.1	1
5	Typical test apparatus	Figure 69.2	Figure 73.2	1
6	Improper insertion test blades	Figure 94.1	Figure 98.1	2
7	Test plug	Figure 105.1	Figure 109.1	1
8	Test blade	Figure 105.2	Figure 109.2	1
9	Receptacle test fixture	Figure 118.1	Figure 122.1	1
10	Pushout tool	Figure 118.3	Figure 122.3	1
11	Bridge	Figure 118.5	Figure 122.5	1
12	Test pin A	Figure 119.1	Figure 123.1	1
13	Test pin B	Figure 119.2	Figure 123.2	1
14	57g ground pin	Figure 119.3	Figure 123.3	1
15	113g ground pin	Figure 119.4	Figure 123.4	1
16	No.14AWG test pin	Figure 129.2	Figure 133.2	1
17	Small test probe	Figure 132.1	Figure 136.1	1
18	Fixture for assembly security test	Figure 144.2	Figure 165.2	1
19	Standard grounding pin	Figure SD 5.1	Figure SD 5.1	1
20	Standard grounding pin	Figure SD 13.1	Figure SD 13.1	1
21	Over size ground pin	Figure SD 13.2	Figure SD 13.2	1

1、 Articulate probe with web stop

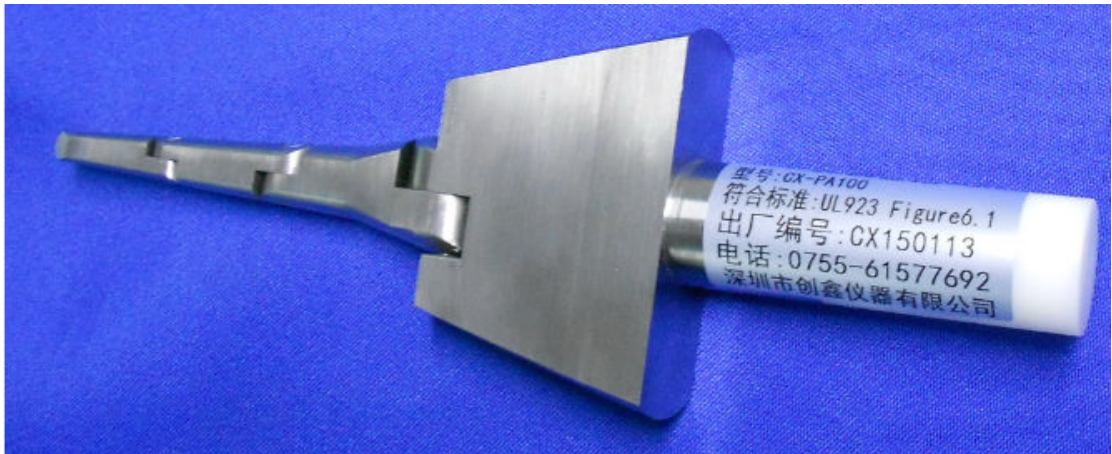


Figure 9.1

2、 Probe



Figure 10.1

3、 Flat probe



Figure 31.1

4、 Reference plug



Figure 69.1

## 6、Improper insertion test blades

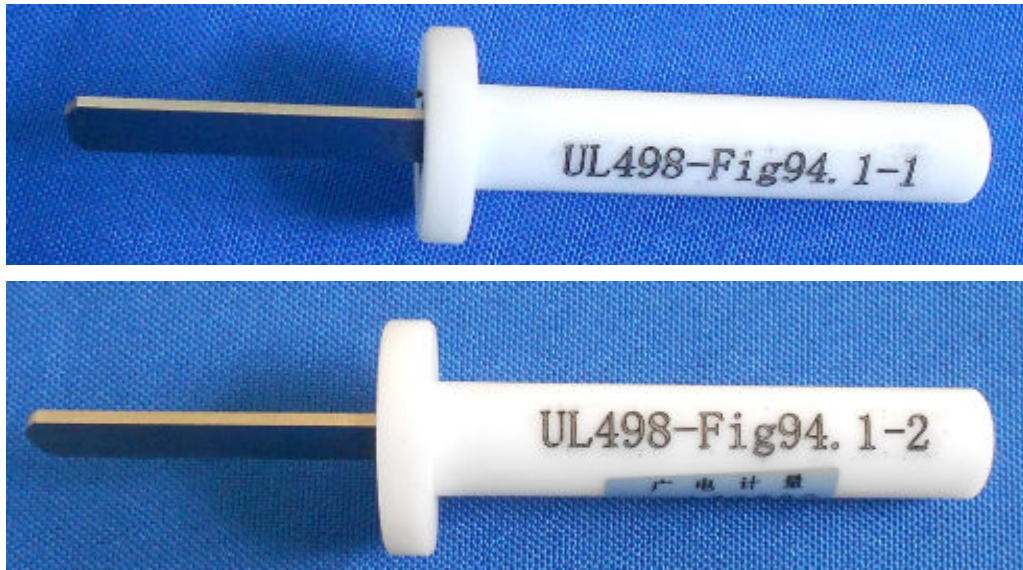


Figure 94.1

## 7、Test gauge



Figure 105.1

## 8、Test blade



Figure 105.2

### 9、Receptacle test fixture



Figure 118.1

### 10、Pushout tool



Figure 118.3

### 11、Bridge

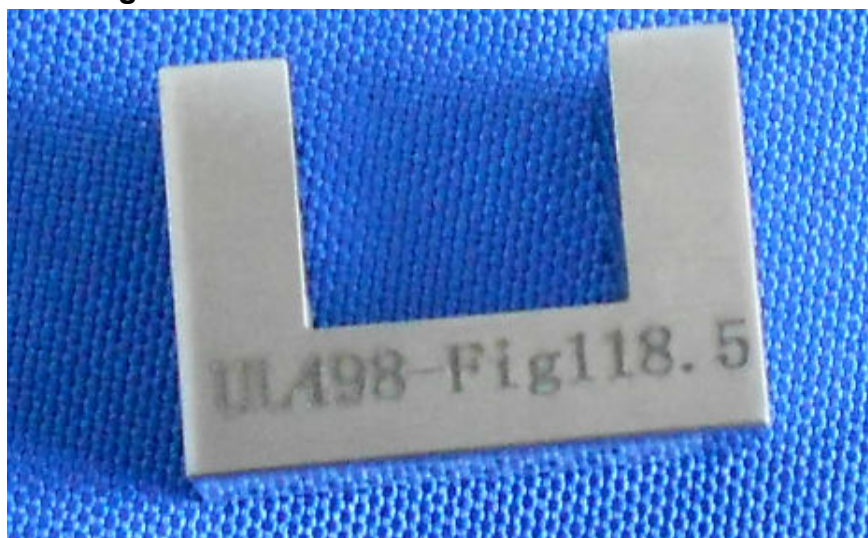


Figure 118.5

12、 Test pin A



Figure 119.1

13、 Test pin B



Figure 119.2

14、 2 oz (57 g) ground pin



Figure 119.3

15、 4 oz (113 g) ground pin



Figure 119.4

16、 14 AWG test pin

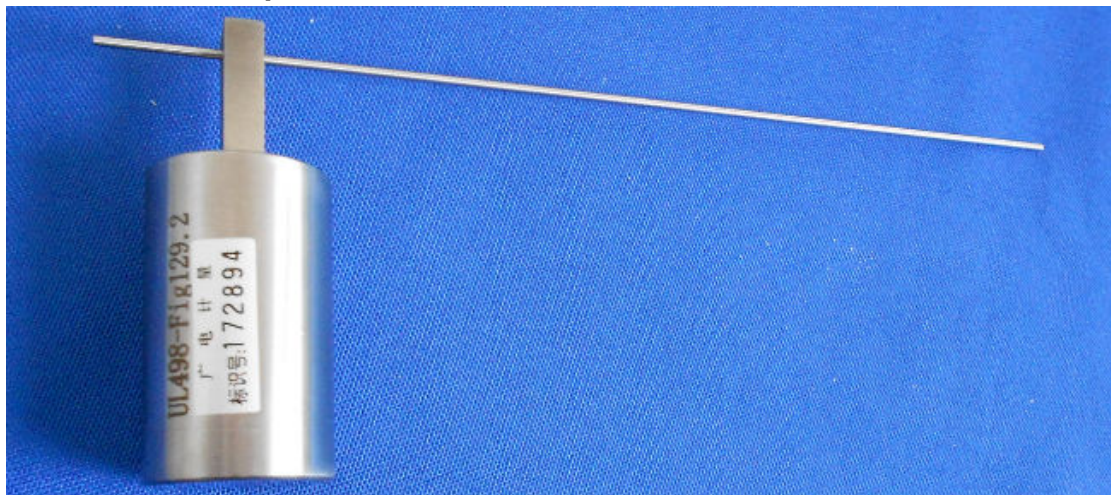


Figure 129.2

### 17、 Small test probe

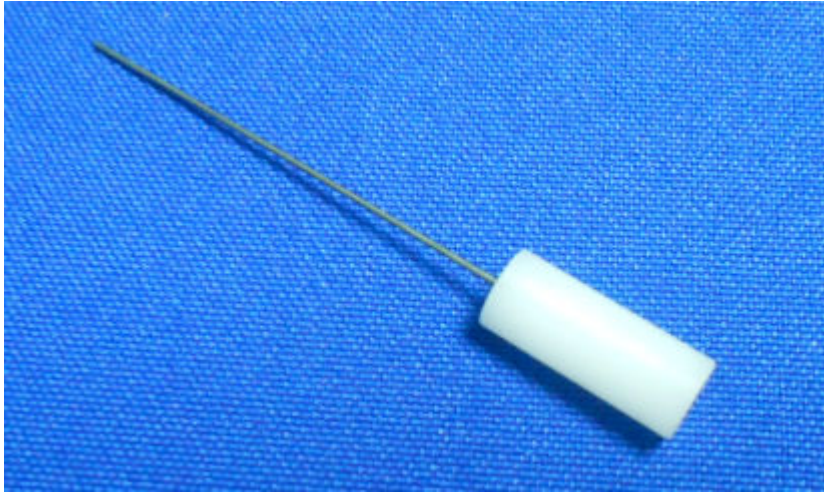


Figure 132.1

### Large test probe

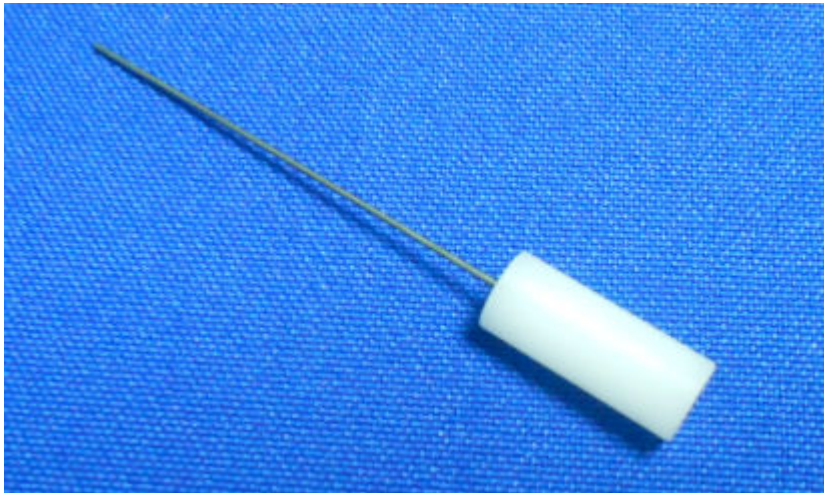


Figure 132.2

### 18、 Fixture for assembly security test

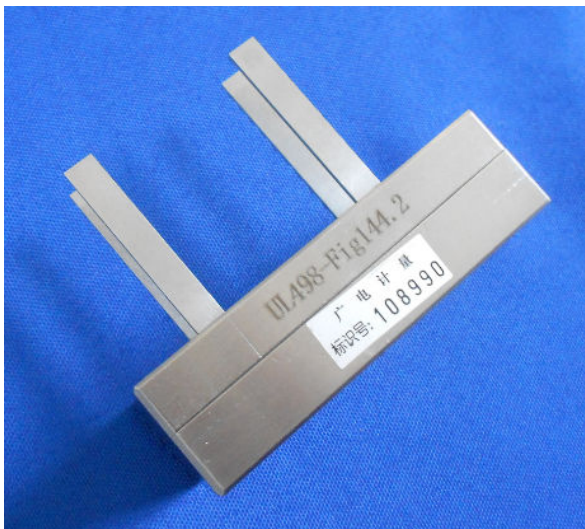


Figure 144.2

### 19、Standard grounding pin



Figure SD5.1

### 20、Standard grounding pin



Figure SD13.1 Figure SD13.2 Figure SD21.1

### 21、Oversize grounding pin



Figure SD13.2 Figure SD25.1

以上产品信息由深圳市创鑫仪器有限公司提供

订购热线：0755—61577692

0755—23702756

0755—23702758

联系人：吴先生 13631576199

在线 QQ 支持：764066388

公司邮箱：szcx17@163.com