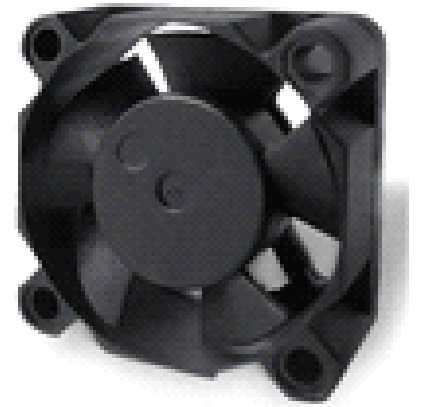


● General Specifications

- ⌚ Material -----Frame:Plastics (Flammability:UL94V-0)
Impeller:Plastics (Flammability:UL94V-0)
- ⌚ Lead Wire-----+ Red - Black (Sensor) Yellow (Control) Brown
UL 1061 AWG#26 OR Equivalent
- ⌚ Storage Temperat--- -30°C ~ +70°C (Non-condensing)
- ⌚ Bearing Type----- Ball Bearings Sleeve
- ⌚ Speed Range----- ±10%
- ⌚ Part Numbering System



SFD-FB0312HA- B R 1

Waterproof level:0=no,1=IP55,2=IP68

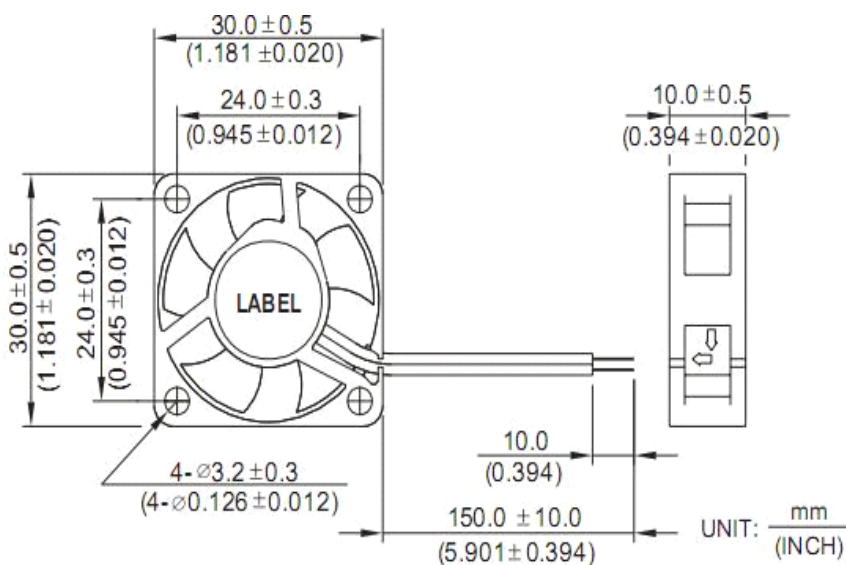
Sensor: 0=no,R=RD sensor ,F=FG sensor ,P=PWM sensor ,T=Temperature sensor

Bearing:S=sleeve bearing,B=ball bearing,Y=superflo bearing

30 X 30 X 10 mm (Mass: 10.6g)

Model No.	Rated Voltage	Operating Voltage	Rated Current	Rated Input	Speed	Maximum Air Flow		Max.Static Pressure		Noise
	VDC	VDC	AMP	Watt		R.P.M	M3/min	CFM	MmH2O	
SFD-FB0305LA	5	4~6	0.08	0.4	6000	0.067	2.36	1.02	0.042	17.5
SFD-FB0305MA			0.13	0.6	8000	0.089	3.18	1.63	0.073	21
SFD-FB0305HA			0.2	1.0	10000	0.11	3.65	2.62	0.115	25.5
SFD-FB0312LA	12	9~13	0.04	0.48	6000	0.067	2.36	1.02	0.042	17.5
SFD-FB0312MA			0.08	0.72	8000	0.089	3.18	1.63	0.073	21
SFD-FB0312HA			0.1	0.96	10000	0.11	3.65	2.62	0.115	25.5

● Dimensions(unit:mm/inch)



● Air Flow-Static Pressure Characteristics

